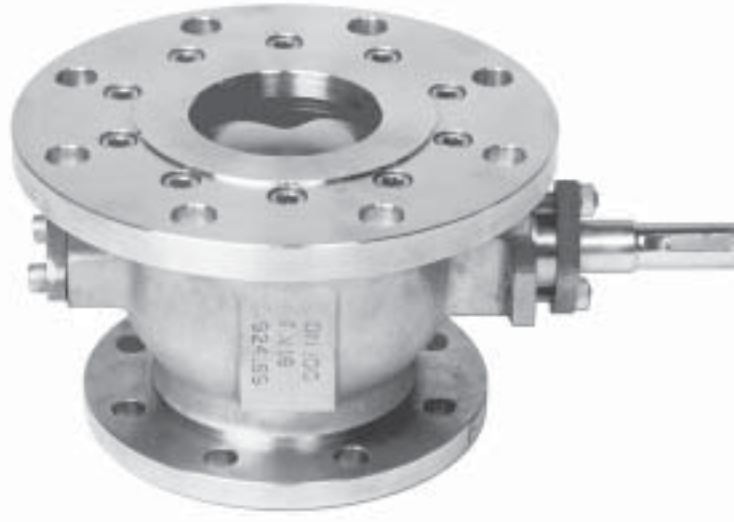


Ball Sector Tank Outlet valve stainless steel PN 16



Application

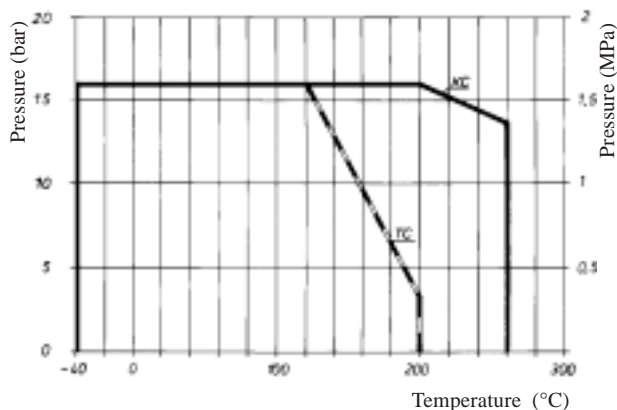
The fig 459 Tank Outlet valve is a variation on the fig 455 ball sector control valve which incorporates a short body section thereby reducing dead area above the seat. The single seat design eliminates the possibility of media becoming trapped in the valve body.

The arrow on the body denotes the correct tightness direction according to ISO 5208.

Nominal pressure PN 16

Operating temperature	KC	TC
max	+260 °C	+200 °C
min	-40 °C	-40 °C

Pressure/ temperature graph



Design

The fig 459 is constructed in 316 stainless steel throughout, the ball sector is hard chromed, seats may be specified as PTFE or stellite, standard end connections are PN16.

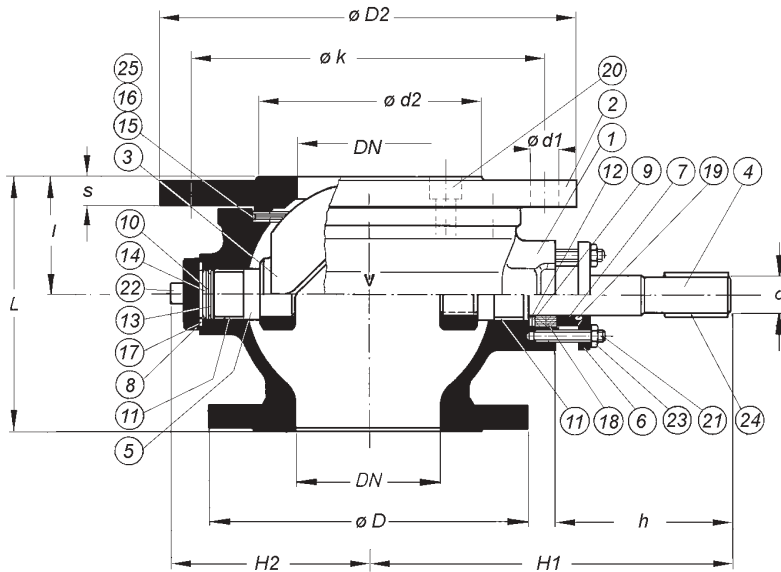
Nominal sizes DN 25 ... 200

Conform with the requirements of the Council Directive 97/23/EC on Pressure Equipment, marking: **CE**₀₄₃₄

Code number	Seat	Leakrate ISO 5208
459KC__Z with bare shaft	Stellite	D
459TC__Z with bare shaft	PTFE	A

For steam: Code number 45901KC With graphite shim

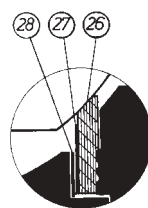
Tank Outlet valve



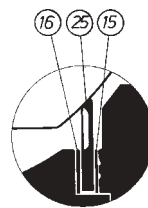
Parts

- | | |
|--------------------------|--------------|
| 1. Body | CF-8M |
| 2. Bottom flange | W:no 4401 |
| 3. V-ball | CF-8M |
| 4. Upper shaft | W:no 4401 |
| 5. Lower shaft | W:no 4401 |
| 6. Gland | W:no 4401 |
| 7. Spacer ring | W:no 4401 |
| 8. Cover | W:no 4401 |
| 9. Thrust bearing ring | W:no 4401 |
| 10. Thrust bearing disc | W:no 4401 |
| 11. Shaft bearing | Pampus |
| 12. Upper thrust bearing | Pampus |
| 13. Lower thrust bearing | Pampus |
| 14. Cup spring | W:no 4401 |
| 15. Shim | Carbon fibre |
| 16. Shim | Carbon fibre |
| 17. Cover gasket | Carbon fibre |
| 18. Packing | Graphite |
| 19. O-ring | EPDM |
| 20. Stud | |
| 21. Stud | |
| 22. Screw | |
| 23. Hexagon nut | |
| 24. Key | Fe |
| 25. K-seat | Stellite |
| 26. T-seat | PTFE |
| 27. Support ring | W:no 4401 |
| 28. Shim | Carbon fibre |

Seat alternatives



**PTFE
459TC**



**Stellite
459KC**

Dimensions

DN	L	l	H1	H2	h	ø d	ø D	BOTTOM FLANGE						Weight kg
								ø D2	s	ø d2	Drilling PN16			
											ø k	ø d1	n St.	
25	89	39	143	68	85	11	115	165	18	60	125	18	4	4,7
50	132	54	196	91	110	20	165	220	20	98	180	18	8	10,7
65	142	63	204	99	110	20	185	250	22	116	210	18	8	14,4
100	180	83	245	136	115	25	220	285	22	158	240	22	8	24
125	281	103	329	185	150	30	250	340	26	188	295	22	12	50
150	314	117	343	199	150	30	285	405	26	212	355	26	12	59
200	382	155	404	248	170	45	340	520	30	268	470	26	16	140