

PIPE BRANCH CONTROL VALVE PN 25



Operation

The HÖGFORS pipe branch control valve, type 36000TR is an ideal multi-purpose, stop and control valve used in pipelines for balancing and stopping the heat conduction.

The valve adjustment functions excellently due to the V-port in the valve seat. The pipe ends are equipped with needle-throttle valve connections. During a through-flow of water the pressure loss occurring in the pipe branch control valve is indicated by the attached differential pressure gauge, i.e. it shows the pressure difference between the measuring points. The water amount flowing through the control valve into the heating device can be adjusted by means of the measured differential pressure value and the diagram of the pipe branch control valve.

The valve is stepless adjustment. The scale dial ranges from 0 to 9. The adjustment is made with a hexagon socket-head cap screw. Since a recorder is available for the valve, the function can very easily be readjusted.

Design

Nominal pressure	PN 25
Working pressure	25 bar
Body made of steel	St 37.0
Ball and spindle	made of stainless steel
Blow-off protected spindle	
Seal rings	made of PTFE

Operating temperature	min -20 °C max +150 °C
------------------------------	---------------------------

Conform with the requirements of the Council Directive 97/23/EC on Pressure Equipment, marking:s



Code number	36000TR __	with manual lever
	36000TR __Z	with bare shaft
	36000TR __M	with gear

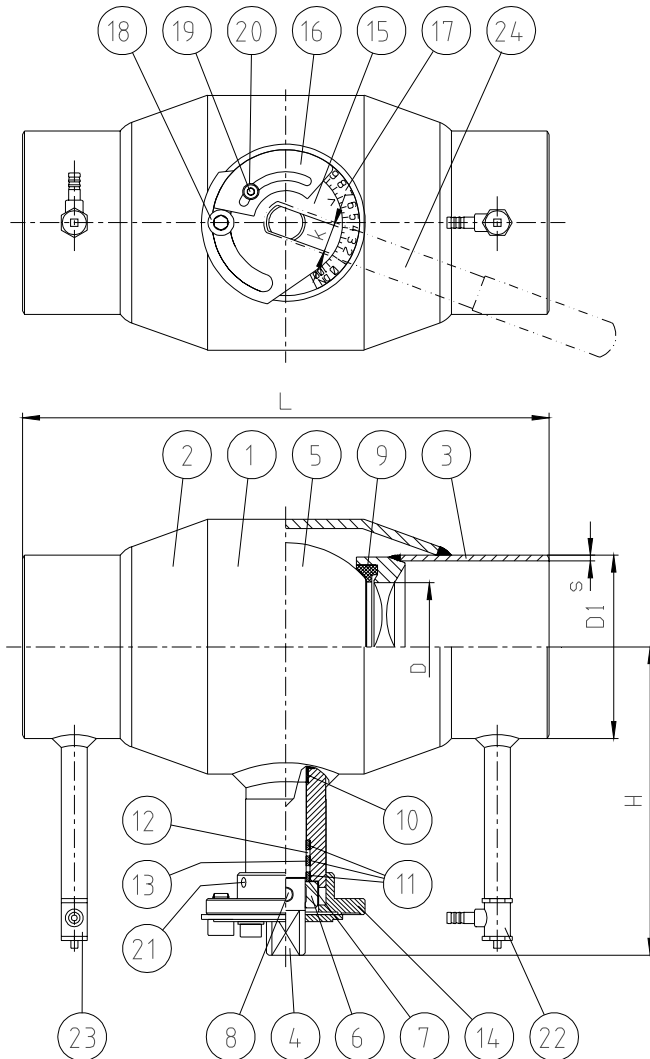
36000

26.02.2002

HÖGFORS

SENTO OY HÖGFORS
P.O.BOX 13, FIN-24101 SALO, FINLAND
TEL + 358 2 727 7200
FAX + 358 2 727 7201
Business ID 0518420-8

PIPE BRANCH CONTROL VALVE



Parts

- | | |
|--|--------------|
| 1. Body | St 37.0 |
| 2. Connecting pipe and sealing housing | St 37.0 |
| 3. Connecting pipe and regulator ring | St 37.0 |
| 4. Stem | W.Nr. 1.4305 |
| 5. Ball | W.Nr. 1.4305 |
| 6. Retaining bush | |
| 7. Spring washer | |
| 8. Pin | |
| 9. Ball seal | PTFE+C |
| 10. Bearing | PTFE+C |
| 11. Back-up-ring | PTFE |
| 12. O-ring | EPDM |
| 13. O-ring | FPM |
| 14. Flange | |
| 15. Regulator plate | |
| 16. Recorder | |
| 17. Dial | |
| 18. Socket screw | |
| 19. Socket screw | |
| 20. Washer | |
| 21. Locking screw | |
| 22. Measuring unit | |
| 23. Measuring unit | |
| 24. Lever | |

Dimensions

DN	PN	D	D1	s	L	H	k
40	25	31	48,3	2,9	260	111	10
50	25	39	60,3	2,9	300	123	10
65	25	50	76,1	2,9	300	136	12
80	25	65	88,9	3,2	300	147	12
100	25	80	114,3	3,6	325	191	17
125	25	100	139,7	4,0	325	206	17
150	25	125	168,3	4,5	350	269	19
200	25	150	219,1	6,3	400	394*)	ø 30

*) with manual gear