

PIPE BRANCH CONTROL VALVE PN 25, PN 16



Operation

The **HÖGFORS** pipe branch control valve, types 36000TR and 36500TR, is an ideal multi-purpose, stop and control valve used in pipelines for balancing and stopping the heat conduction.

The valve adjustment functions excellently due to the V-port in the valve seat. The pipe ends are equipped with needle-throttle valve connections. During a through-flow of water the pressure loss occurring in the pipe branch control valve is indicated by the attached differential pressure gauge, i.e. it shows the pressure difference between the measuring points.

The water amount flowing through the control valve into the heating device can be adjusted by means of the measured differential pressure value and the diagram of the pipe branch control valve.

The valve is stepless adjustment. The scale dial ranges from 0 to 9. The adjustment is made with a hexagon socket-head cap screw. Since a recorder is available for the valve, the function can very easily be readjusted.

Design

Nominal pressure	PN 25
Working pressure	25 bar
Body made of steel	St 37.0
Ball and spindle made of stainless steel	
Blow-off protected spindle	
Seal rings made of	PTFE
36500TR equipped with flanged joint DIN 2501	
PN 16, PN 25	

Operating temperature	min -20 °C max +150 °C
------------------------------	---------------------------

Conform with the requirements of the Council Directive 97/23/EC on Pressure Equipment, marking:s

CE₀₄₃₄

Sanitary trap - combination



36000
36500

18.10.2002

HÖGFORS

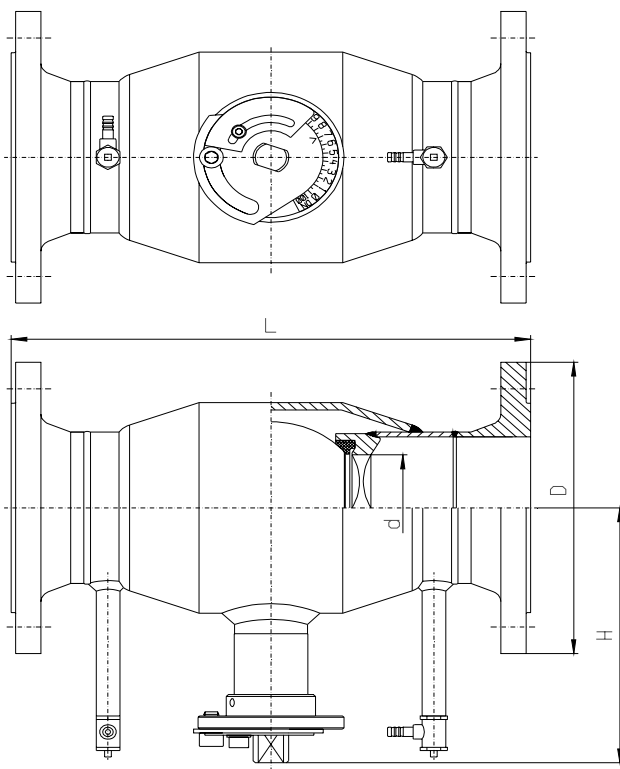
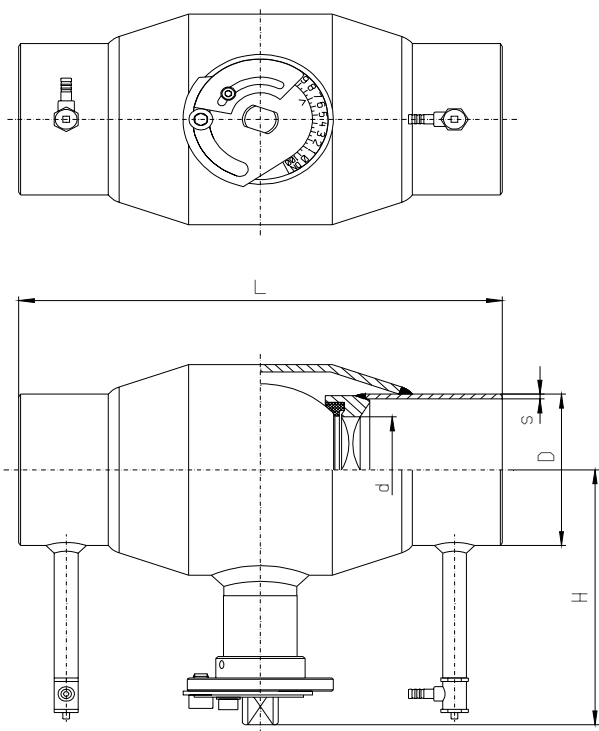
SENTO OY HÖGFORS
P.O.BOX 13, FIN-24101 SALO, FINLAND
TEL + 358 2 727 7200
FAX + 358 2 727 7201
Business ID 0518420-8

PIPE BRANCH CONTROL VALVE

Code number:
36000TR

Code number:

36500TR___ (flange bore PN 16)
36500TR___ **Z** (flange bore PN 16)
36500TR___ **M** (flange bore PN 16)
36500TR___ **N1** (flange bore PN 25)
36500TR___ **Z1** (flange bore PN 25)
36500TR___ **M1** (flange bore PN 25)



Dimensions

DN	PN	d	D	s	L	H	k
40	25	31	48,3	2,9	260	111	10
50	25	39	60,3	2,9	300	123	10
65	25	50	76,1	2,9	300	136	12
80	25	65	88,9	3,2	300	147	12
100	25	80	114	3,6	325	191	17
125	25	100	140	4,0	325	206	17
150	25	125	168	4,5	350	269	19
200	25	150	219	6,3	400	394*)	ø 30

*) with manual gear

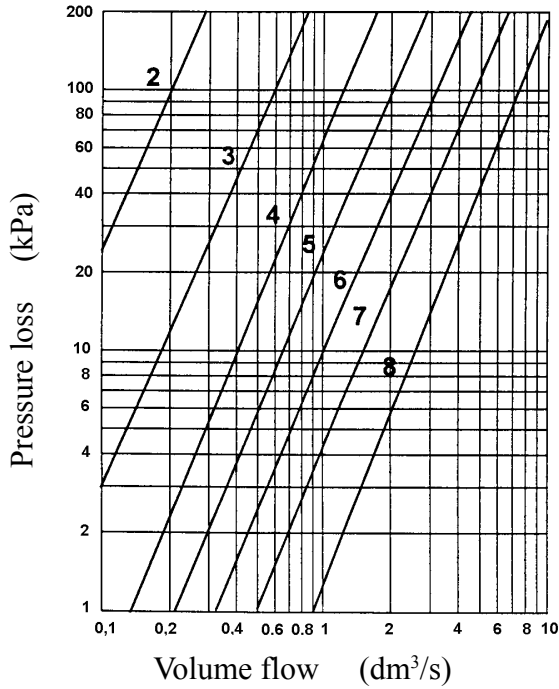
Dimensions

DN	PN		d	D		L	H	k
		N1			N1			
40	25		31	150		240	111	10
50	25		39	165		250	123	10
65	16	25	50	185	185	290	136	12
80	25		65	200		310	147	12
100	16	25	80	220	235	350	191	17
125	16	25	100	250	270	400	206	17
150	16	25	125	285	300	480	269	19
200	16	25	150	340	360	600	394*)	ø 30

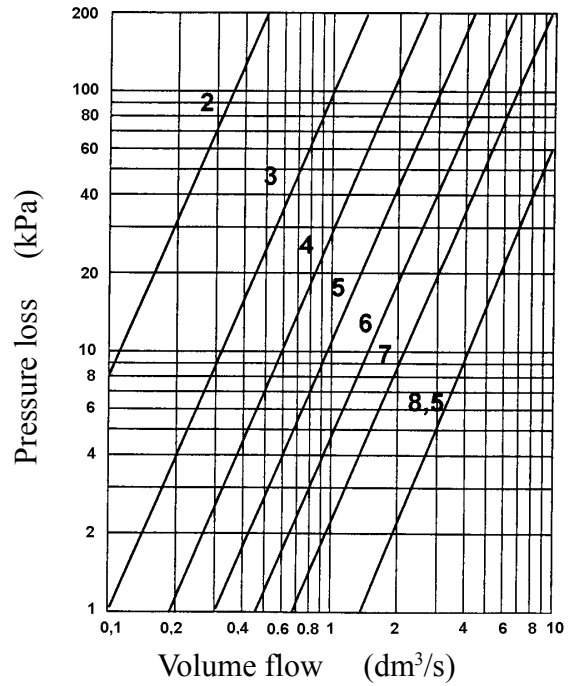
*) with manual gear

PIPE BRANCH CONTROL VALVE

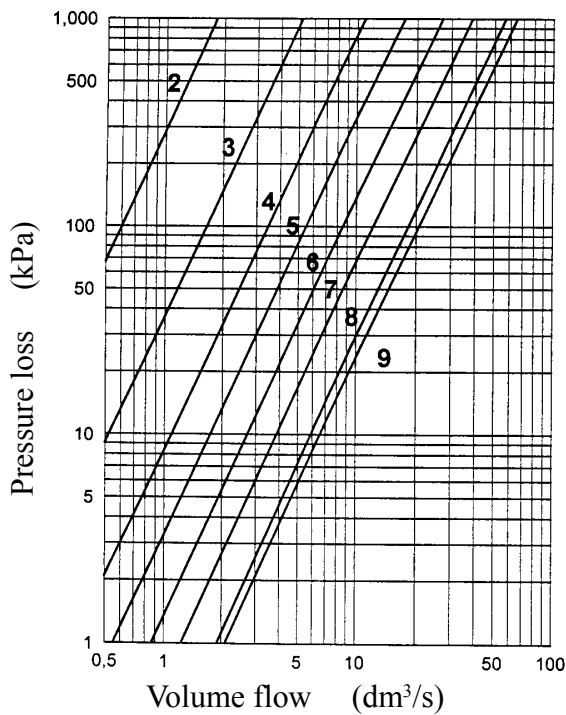
DN 40



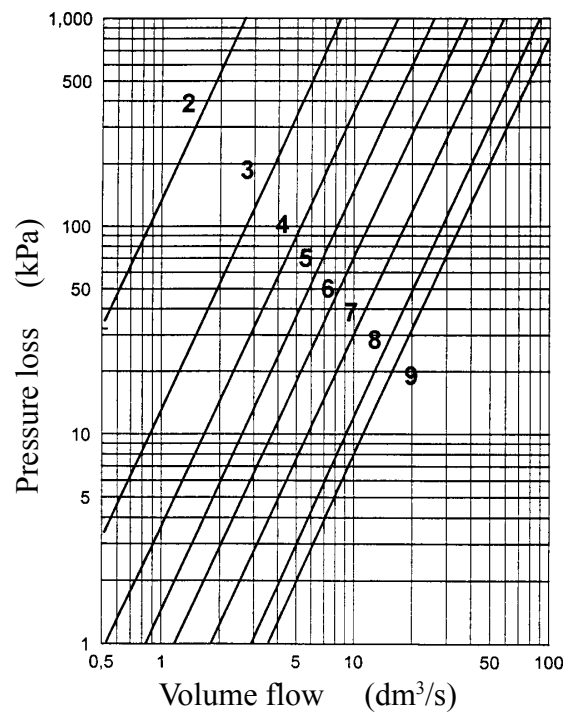
DN 50



DN 65

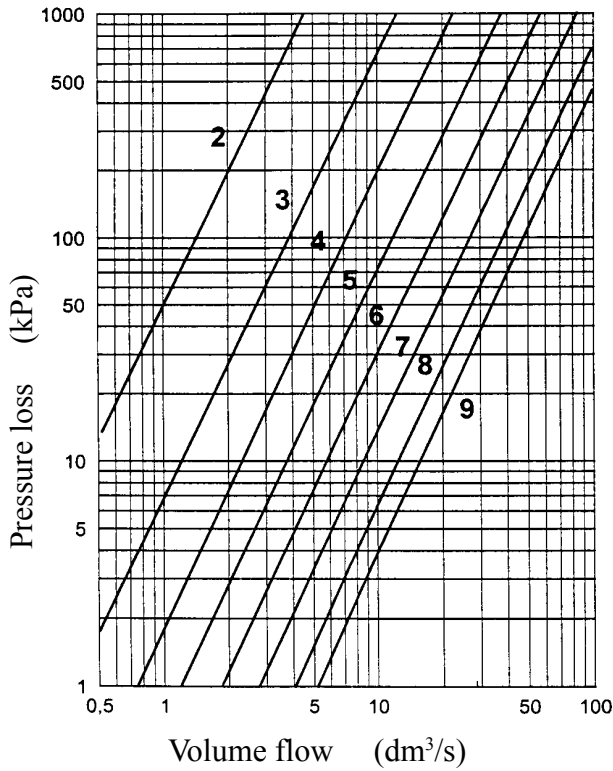


DN 80

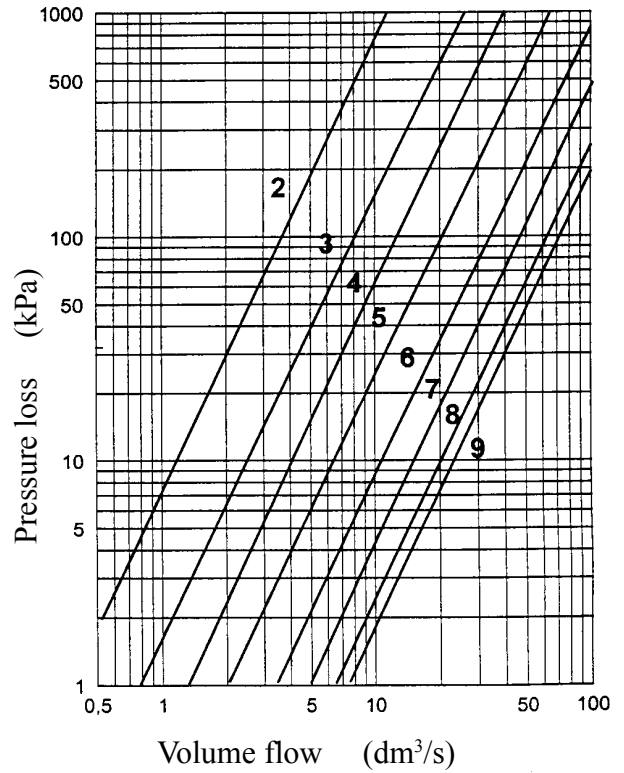


PIPE BRANCH CONTROL VALVE

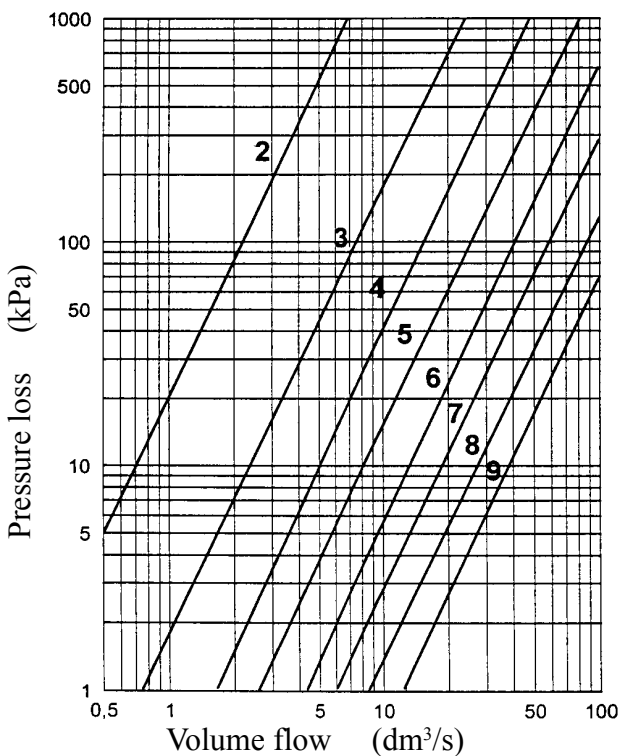
DN 100



DN 125



DN 150



DN 200

