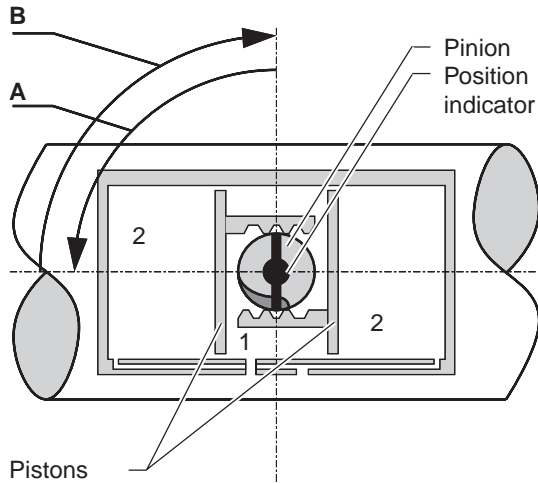


Double acting actuator assembly codes

A

STANDARD MOUNTING: IN LINE

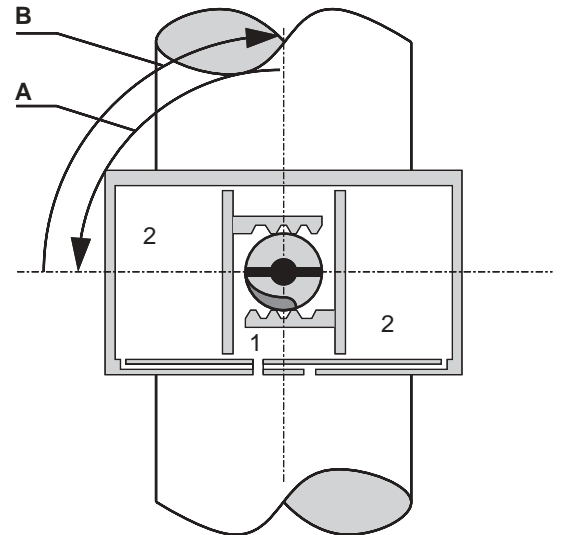


- A = Pilot valve operated** in Function Module - Central air chamber (1) pressurized
- B = Pilot valve not operated** in Function Module - End cap air chambers (2) pressurized

All views are from above.
Pistons are shown in inner position

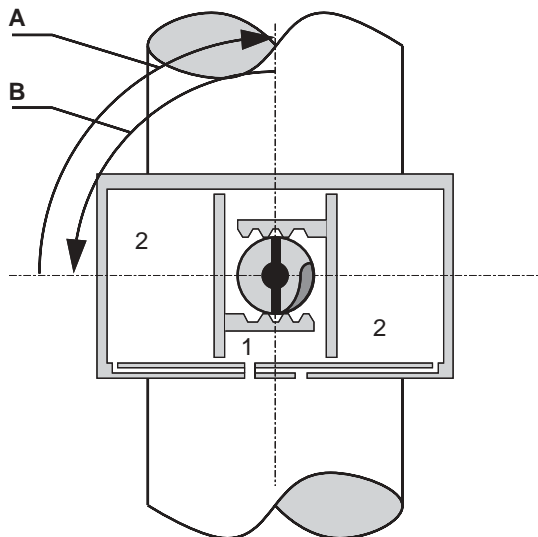
B

MOUNTING: ACROSS LINE
- Position Indicator turned 90° (from standard)



C

MOUNTING: ACROSS LINE
- Pistons turned 180° (from standard) +
- Pinion turned 90° (from standard)



D

MOUNTING: IN LINE
- Position Indicator turned 90° (from standard) +
- Pistons turned 180° (from standard) +
- Pinion turned 90° (from standard)

