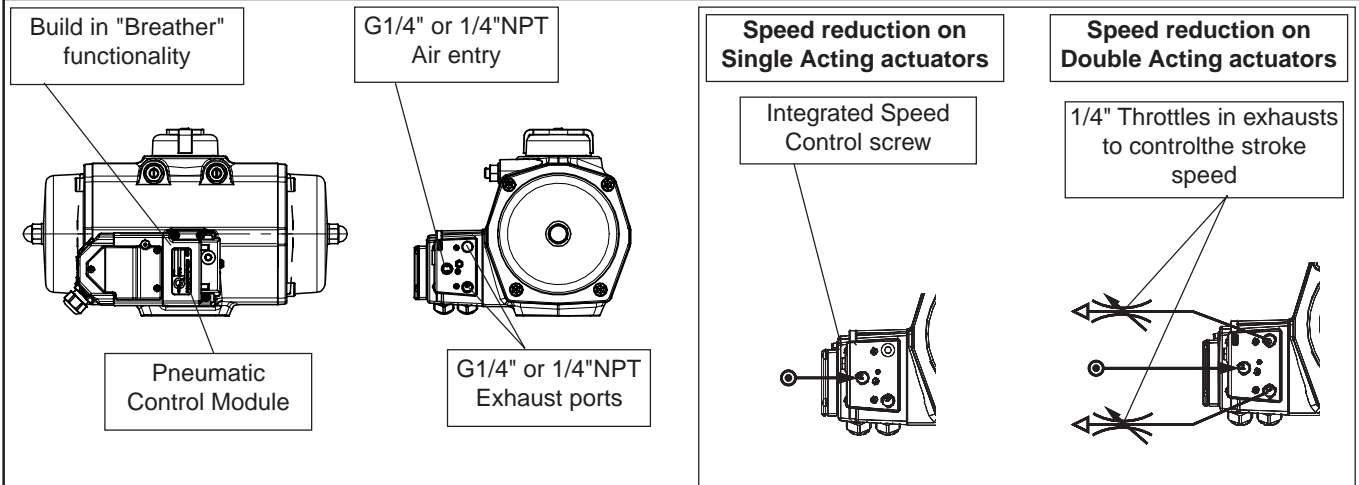


## Pneumatic control module with speed control



### Speed Control on Single Acting actuators

Two integrated speed control options are available:

- 1 Speed control for the spring stroke.  
The speed control screw controls the air flow out of the central air chamber and therefore the speed of the spring stroke.
- 2 Speed control for spring- and air stroke.  
The speed control screw controls the air flow in and out of the central air chamber and therefore the speed of the spring- and air stroke.

These options are only available for single acting (spring return) actuators.

### Breather Function

Both versions have the build in "Breather" function. During the spring stroke, it leads the exhausted supply air out of the central air chamber to the spring chambers. This function prevents contamination and corrosion of the internals of the spring chambers and maximises actuator lifetime.

### Speed reduction on Double Acting actuators

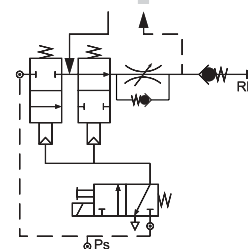
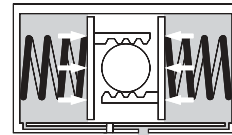
To reduce the stroke speed on a double acting actuator, it can be equipped with G1/4" or 1/4"NPT throttles in one or both the exhausts of a basic Pneumatic Control Module.

### Valve block

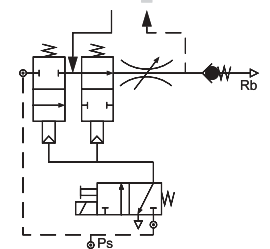
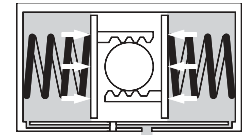
The module contains a valve block with two (single acting) or four (double acting) diaphragm/poppet valves. The valves are operated by a pilot valve in the function module. To assure trouble-free operation, the valve block is equipped with big ports.

This enables a large air flow and to makes it less sensitive for contamination of the internals. The large air flow also enables it to be utilised for the entire FieldQ range.

### Speed Control of spring stroke



### Speed Control of spring stroke and air



### Specification Pneumatic Control Module with Speed Control

Function	: Single Acting (spring return)
Actuator range	: Q40 to Q1600
"Breather" function	: Standard for single acting actuators
Pressure range	
- Double acting	: 2 to 8 bar g / 30 to 120psig
- Spring return	: 6 to 8 bar g / 87 to 120psig with maximum spring set.
	: 3 to 8 bar g / 43 to 120psig with reduced spring set.
Temperature	: -20° to +80°C / -4° to 176°F
Enclosure	: IP65
Air entry	: G1/4" or 1/4"NPT
Exhaust ports	: G1/4" or 1/4"NPT

### Material

Body	: Aluminium
Valve housing	: 30% glass-filled Nylon
Valve seats	: Buna-N
Membrane	: Buna-N

### Operating media

- Air or inert gasses.
- Air quality according ISO 8573-1 7-5-4.
- Dew point 10 K below operating temperature.
- For subzero applications take appropriate measures.