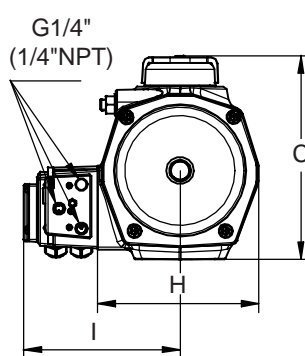
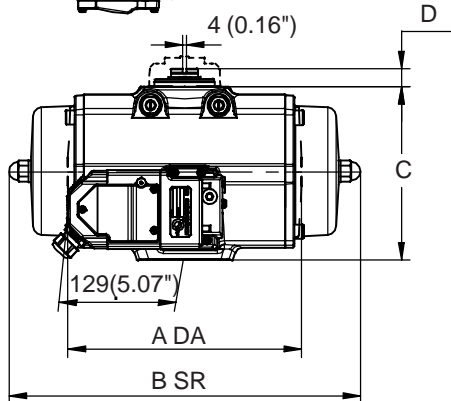
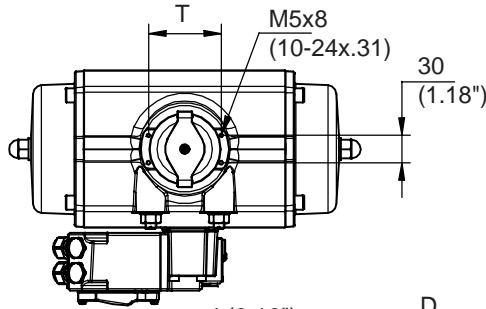


## Dimensions FieldQ valve actuator (ISO 5211)

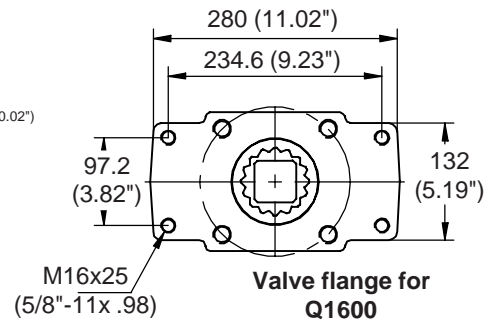
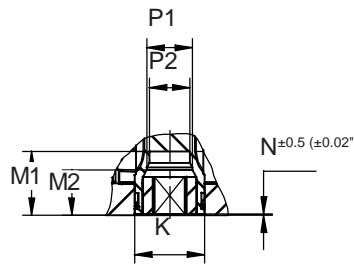
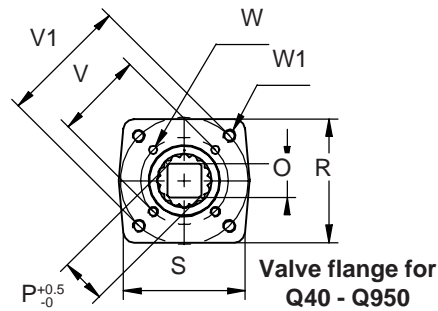
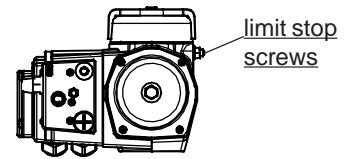
Metric and UNC threaded

Top flange according VDI/VDE 3845 (NAMUR)



**Note:**

1. Dimensions are metric.
2. Dimensions in brackets are for imperial actuators they are inches or UNC thread.
3. The limit stop screws on the QS40 and QD 40 are on the opposite side to those on the larger actuators.



	Actuators EQ-series													
	E 40		E100		E200		E 350		E600		E950		E1600	
	mm	inch	mm	inch	mm	inch	mm	inch	mm	inch	mm	inch	mm	inch
<b>A DA</b>	180	7.09	221	8.70	283	11.14	305	12.01	387	15.24	424	16.69	516	20.31
<b>B SR</b>	204	8.03	267	10.51	360	14.17	387	15.24	477	18.78	517	20.35	637	25.08
<b>C</b>	104	4.09	141	5.55	161	6.34	191	7.52	245	9.65	276	10.87	337	13.27
<b>C'</b>	137	5.39	175	6.89	194	7.64	225	8.86	289	11.38	319	12.56	380	14.96
<b>D</b>	20	0.79	20	0.79	20	0.79	20	0.79	30	1.18	30	1.18	30	1.18
<b>H</b>	86	3.39	108	4.25	128	5.04	173	6.81	207	8.15	231	9.09	265	10.43
<b>I</b>	128	5.04	141	5.55	149	5.87	171	6.73	187	7.36	200	7.87	217	8.54
<b>K</b>	33	1.30	38	1.50	55	2.17	55	2.17	68	2.68	75	2.95	95	3.74
<b>M1</b>	34.5	1.36	34.5	1.36	50	1.97	50	1.97	52	2.05	64	2.52	82	3.23
<b>M2</b>	-	-	27	1.06	37	1.46	37	1.46	-	-	-	-	-	-
<b>N</b>	1	0.04	1.5	0.06	1.5	0.06	1.5	0.06	1.5	0.06	1.5	0.06	1.5	0.06
<b>O max.</b>	14.11	0.56	19.13	0.75	22.13	0.87	27.13	1.07	27.13	1.07	36.16	1.42	46.16	1.82
<b>O min.</b>	14.00	0.55	19.00	0.75	22.00	0.87	27.00	1.06	27.00	1.06	36.00	1.42	46.00	1.81
<b>P</b>	18.1	0.71	25.2	0.99	28.2	1.11	36.2	1.43	36.2	1.43	48.2	1.90	60.2	2.37
<b>P1</b>	18.1	0.71	23.1	0.91	32.1	1.26	32.1	1.26	36.5	1.44	48.5	1.91	60.5	2.38
<b>P2</b>	-	-	25.2	0.99	36.2	1.43	36.2	1.43	-	-	-	-	-	-
<b>R</b>	65	2.56	70	2.76	90	3.54	114	4.49	124	4.88	130	5.12	154	6.06
<b>S</b>	65	2.56	70	2.76	90	3.54	114	4.49	124	4.88	142	5.59	280	11.02
<b>T</b>	80	3.15	80	3.15	80	3.15	80	3.15	130	5.12	130	5.12	130	5.12
<b>V</b>	50	1.969	50	1.969	70	2.756	70	2.756	102	4.016	102	4.016	165	6.496
<b>V1</b>	70	2.756	70	2.756	102	4.016	102	4.016	125	4.921	140	5.512	-	-
<b>W</b>	M6x 10	1/4"- 20x.39	M6x 10	1/4"- 20x.39	M8x 13	5/16"- 18x.39	M8x 13	5/16"- 18x.39	M10x 16	3/8"- 16x.63	M10x 16	3/8"- 16x.63	M20x 30	3/4"- 10x1.14
<b>W1</b>	M8x 13	5/16"- 18x.39	M8x 13	5/16"- 18x.39	M10x 16	3/8"- 16x.63	M10x 16	3/8"- 16x.63	M12x 20	1/2"- 13x.79	M16x 25	5/8"- 11x.98	-	-