



Technical details

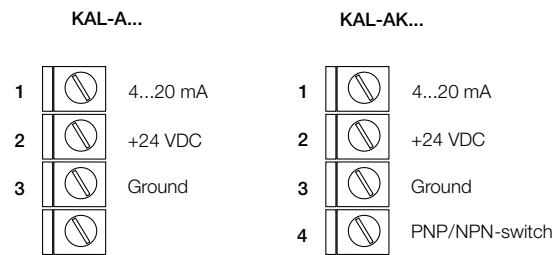
Power supply: 24 VDC ± 20 %
 Power input: max. 3,6 W (typically 1,2 W)
 Ambient temperature: -20° C to +60° C
 Temperature of medium: -20° C ... +80° C
 Max. pressure: 100 bar
 Time delay before availability: max. 12 s
 Measuring range: approx. 4 cm/s to 200 cm/s
 Temperature gradient: unlimited
 Response time: 5,6...12 s
 Accuracy: ± 10 % of measured value
 Reproducibility: ± 1 % of measured value
 Signal output: 4-20 mA
 Flow rate indication: Trend indication with 8-LED's
 Protection type: IP 65
 Case material: glass-fibre-reinforced polyamide



For KAL-AK...only

Switching function: N/O contact
 Switch point adjustment: with potentiometer, optical indication on LED chain with flashing LED
 Output indicator: LED, red= alarm, green= flow OK
 Switching output: semiconductor, PNP/NPN switchable, max. 400 mA, short-circuit proof

Electrical connection



Order details

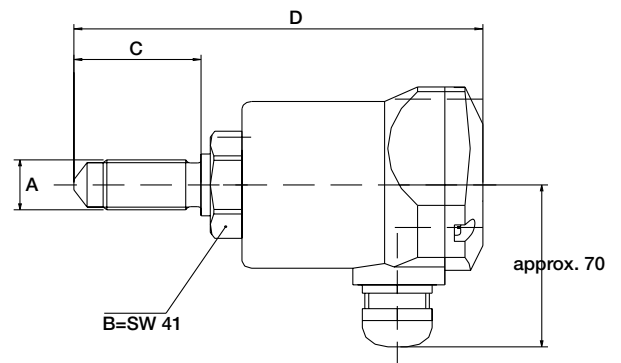
Output/contact	Connection	Order numbers for materials			Electrical connection
		1.4301	1.4305	1.4571	
4-20 mA/ without contact	G ¼"	KAL A1308A4	-	KAL A1408A4*	PG=PG 13,5 ST=plug M12x1
	G ½"	KAL A1315A4	KAL A1215A4	KAL A1415A4	
	G ¾"	KAL A1320A4	-	KAL A1420A4*	
	M 12x1	KAL A0312A4	-	-	
	¼" NPT	KAL A5308A4	-	KAL A5408A4*	
	½" NPT	KAL A5315A4	-	KAL A5415A4	
	¾" NPT	KAL A5320A4	-	KAL A5420A4*	
1½" Tri clamp, DIN 32676	-	-	KAL A4440A4		
4-20 mA/ N/O contact NPN/PNP switchable	G ¼"	KAL AK1308AS	-	KAL AK1408AS*	PG=PG 13,5 ST=plug M12x1
	G ½"	KAL AK1315AS	KAL AK1215AS	KAL AK1415AS	
	G ¾"	KAL AK1320AS	-	KAL A1420AS*	
	M 12x1	KAL AK0312AS	-	-	
	¼" NPT	KAL AK5308AS	-	KAL AK5408AS*	
	½" NPT	KAL AK5315AS	-	KAL AK5415AS	
	¾" NPT	KAL AK5320AS	-	KAL AK5420AS*	
1½" Tri clamp, DIN 32676	-	-	KAL AK4440AS		

Example of order: KAL-A1308A4PG

*Stainless steel hexagon 1.4301

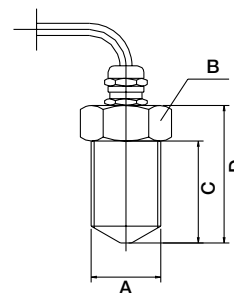
Dimensions
KAL-K..., KAL-A(K)...

A (mm)	C (mm)	D (mm)
G 1/4	26	116
G 1/2	40	130
G 3/4	43	133
M 12x1	23	113
1/4" NPT	16	116
1/2" NPT	27	130
3/4" NPT	33	126



KAL-...sensor

A (mm)	B	C (mm)	D (mm)
M 12x1	HEX 19	23	43
G 1/4	HEX 19	26	43
G 1/2	HEX 27	43	58
G 3/4	HEX 32	43	58



KAL-...with pipe fitting

A	B	C (mm)	D (mm)	E (mm)
G 1/4	HEX 27	10	50	81
G 1/2	HEX 27	10	50	81
G 3/4	HEX 32	15	52	82,5
G 1	HEX 39	15	56	85
G 1 1/4	HEX 46	15	50	90
G 1 1/2	HEX 55	15	50	92,5

