

Subject to change without notice

VALVE AUTOMATION SYSTEMS

INTERNATIONAL
ELO-MATIC

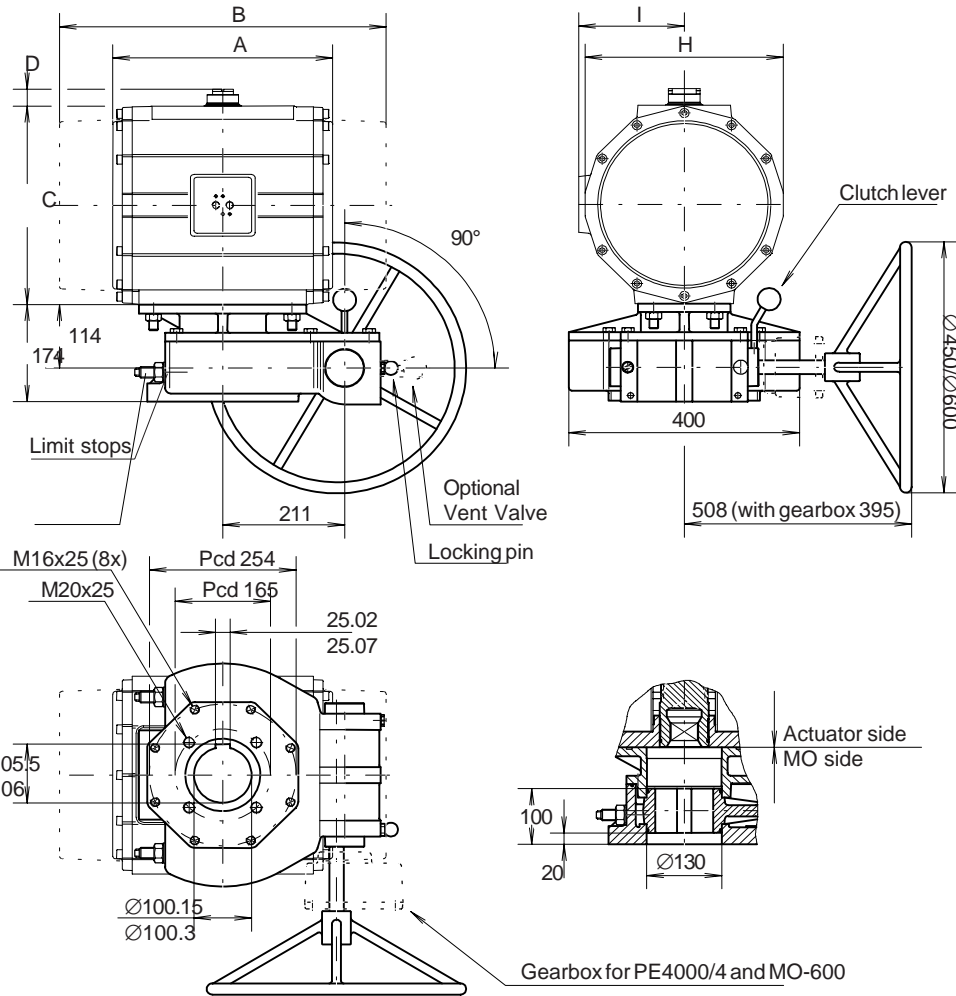
All rights reserved

Nr.:

3.402.4

Date:

Aug. '97



Dim. in mm.	MO-520			MO-600
	ED1600 ES1600	PD2500 PE2500	PD4000	PE4000
A ED	520	378	502	-
B ES	641	570	-	834
C	297	356	380	380
D	30	30	30	30
H	265	350	380	380
I	142	185	200	200
Handwheel dia.	450	450	600	450

Description:

The ELO-matic MO Series declutchable gear operators offer simple and reliable manual positioning of valves, dampers and other quarter-turn devices when overriding, existing pneumatic or hydraulic rotary actuators. All ELO-matic MO-units are suitable for indoor and outdoor use and combine rugged construction, light weight and modular design to provide the most efficient and cost effective solution to a full range of manual override requirements.

The self-locking bronze on highgrade aluminium worm gear design means safe and easy operation, positive manual positioning and extremely long life.

The ELO-matic override can be adapted to any quarter-turn actuator and may even be installed in the field on existing valves.

Operation:

To engage manual operation, first pull the spring loaded locking pin, then rotate the clutch lever clockwise until the clutch lever re-engages. Anti-clockwise lever movement dis-engages manual operation and returns the system to automatic operation.

Note: When under manual control, the valve remains locked in the last set position.

Identification:

For basic override : MO-520 and indication of actuator size, e.g.: MO-520 for P2500 or MO-600 for PE4000.

For complete assemblies : P2500+MO-520 or PE4000+MO-600.

Assembly codes:

- A - Standard.
- B - Reversed operation: handwheel on the other side (factory option).

Specification:

- Body : Cast aluminium.
- Drive sleeve / gearquadrant : Cast iron \ bronze.
- Worm : Steel.
- Shaft : Stainless steel (AISI 430F).
- Temperature : -20°C to +80°C.
- Stroke adjustment : +5° and -5° from each end.
- Movement : 0° - 90°.
- Finish : Two part polyurethane coating.
- Fasteners : Stainless steel.

Input / Output

	MO-520	MO-600
At rim	No. of turns : 22.	: 48.
	Max. input force : 400 N.	: 180 N.
At output shaft	Max. output torque : 5200 Nm.	: 6000 Nm.
Weight	: 36 kg.	: 38 kg.

Optional:

Electric position indication and vent valves (see datasheet 3.403).

EL-O-MATIC ACTUATOR WITH MANUAL OVERRIDE

MO-520/600