

Subject to change without notice

VALVE AUTOMATION
SYSTEMS

INTERNATIONAL
ELO-MATIC[®]

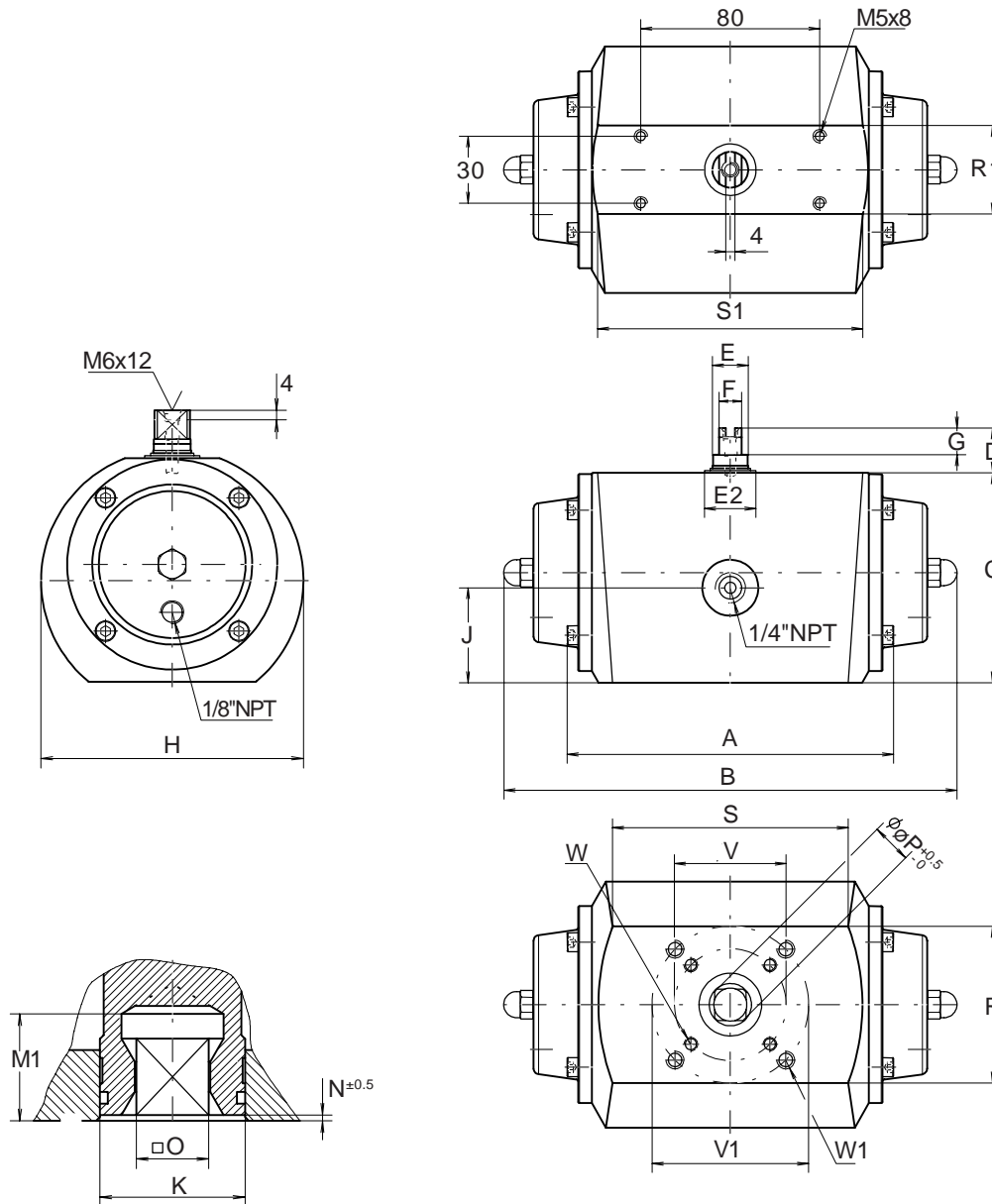
Nr.:

1.103.131

All rights reserved

Date:

Febr. '99



Dimension in mm.	ACTUATOR TYPE			
	E25	E40	E100	E200
A ED	129	146	182	240
B ES	188	213	265	365
C	80	93	118	143
D	20	20	20	20
E	16	22	22	36
E2	23	30	30	45
F	10	14	14	19
G	12	12	12	12
H	95	110	135	160
J	37.2	42.5	54.6	66.6
K	24	33	38	55
M1	27	27	27	31
N	1	1	1.5	1.5
O max.	11.11	14.11	19.13	22.13
O min.	11.00	14.00	19.00	22.00
P	14.1	18.1	25.2	28.2
R	59	69	79	88
R1	41	39	47.5	49
S	93	105	134	186
S1	103	118	149	203
V	36	50	50	70
V1	50	70	70	102
W	M5x8	M6x9	M6x9	M8x12
W1	M6x9	M8x10	M8x10	M10x12

Note:

1. These dimensions are valid for both carbon steel (1.101.40) and stainless steel actuators
2. Flange and square drive to ISO 5211
3. Top flange to VDI/DE 3845 (NAMUR)

DIMENSION SHEET STEEL ACTUATOR

E