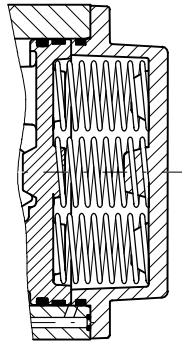
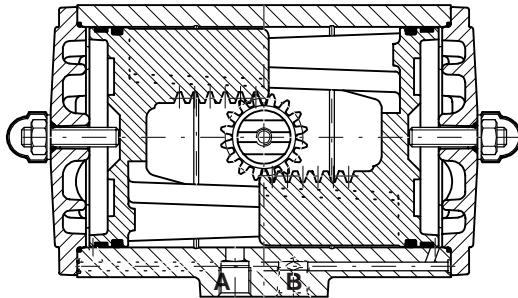


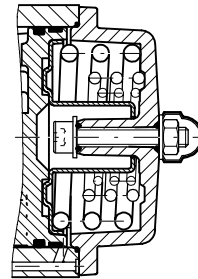
P-Series - Double acting



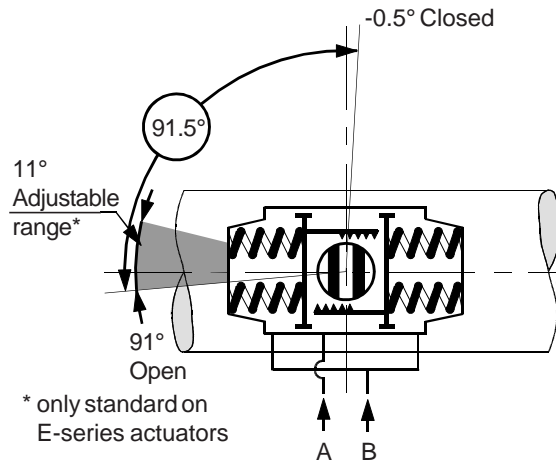
Spring return



E-Series - Double acting



Spring return



Specification:

Pressure range : Double acting 0.2 to 10 bar.
: Spring return 6 to 10 bar, with max. spring set.
: 3 to 10 bar, reduced spring quantity.

Torque : 14.6 to 4955 Nm at 6 bar supply.
(see torque datasheets 1.104.01 and 1.104.02).

Operating media : Air, dry or lubricated or non-corrosive gas.

Temperature : -20° to +80°C

Lubrication : Factory lubricated for the normal life of the actuator.

Construction : Suitable for indoor and outdoor installation.

Finish : Two component polyurethane coating, see 4.204.01.

Rotation : 91.5° (-0.5° cw to 91° ccw)

Double acting : Standard counter clockwise with port "A" pressurized
(code A, see data sheet 1.503 for other assembly codes).

Spring return : Clockwise fail action
(code A, see data sheet 1.504 for other assembly codes).

Limit stops : Standard on E-series. Adjustable range 91°/80°
: Optional on P-series. See datasheet 1.501.01
: For double stroke adjustment. See datasheet 1.501.05

Note:

1. Operating time is average with actuator under load and solenoid valve fitted.
2. Air consumption is the actual free air volume at 1 atm.
3. Pressure is in bar.
4. ED or PD = Double acting.
ES or PS = Single acting.
PE = Single acting.

ACTUATOR TYPE		E12	E25	E40	E65	E100	E200	E350	E600	E950	E1600	P2500	P4000	
Bore	mm.	46	56	70	80	91	110	145	175	200	230	300	325	
	Stroke	mm.	12.6	15.7	18.8	22	25.1	37.7	37.7	44	50.3	62.8	56.5	81.7
Weight:	Double acting	kg.	0.61	1.3	1.8	2.4	3.1	5.8	10.4	19.4	26.4	42.7	56.8	86.6
	Spring return	kg.	0.67	1.7	2.4	3.6	4.6	9.1	16.9	27.6	38.6	65.8	88.2	131.8
Operating time		sec.	0.4	0.5	0.7	1.1	1.2	2.3	3.6	4.5	5.4	7	12	
Air consumption at 1 atm (litres)	port A	stroke	0.05	0.1	0.16	0.33	0.35	0.8	1.8	2.9	4.7	7.3	8	13.5
	port B	stroke	0.06	0.11	0.22	0.36	0.49	1	1.9	3.1	4.9	8.0	9.3	17.5